

Instrucciones de uso

Descripción del producto

Toallitas desinfectantes de superficies

topdental™
Bossklein®

Fecha revisión: 17/04/20 v2.2

Para la desinfección de todo tipo de superficies. Especialmente formulado para uso autorizado en entornos dentales o sanitarios en procesos no invasivos.

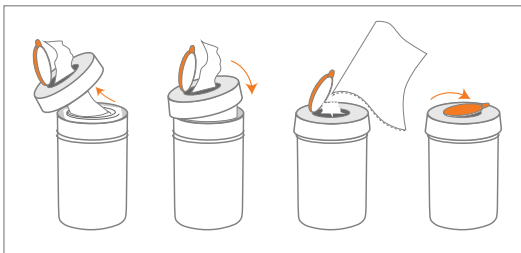
Bote con carga



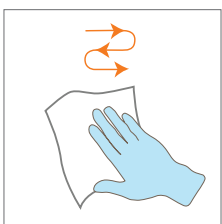
1. Abra la tapa del bote dispensador.



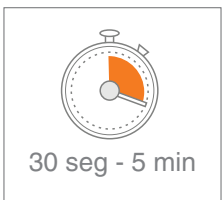
2. Corte la bolsa de plástico sellada herméticamente por la línea de puntos de la parte superior.



3. Introduzca la toallita central en el agujero y deséchela tirando de ella. Coja cada toallita necesaria en un ángulo de 45°

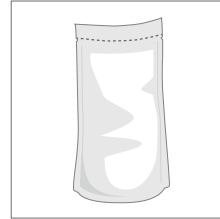


4. Use una nueva toallita cada vez, en las superficies u objetos que desee desinfectar hasta que estén completamente humedecidos.

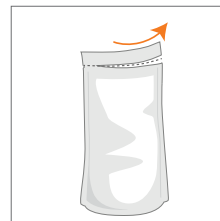


5. Deje que el desinfectante actúe por un mínimo de 30 segundos (para lograr la máxima eficacia déjelo 5 minutos), permitiendo su total evaporación o limpiándolo con un trapo limpio. Recomendado para uso profesional. Lea la etiqueta del producto o la hoja de seguridad para mayores datos técnicos. Consulte a su distribuidor local.

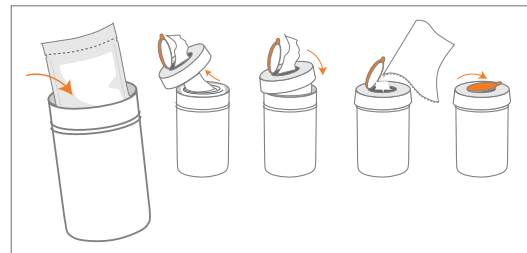
Equipar recarga



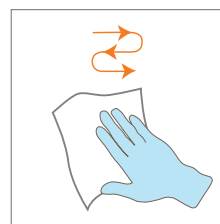
1. Coloque la carga en el bote dispensador.



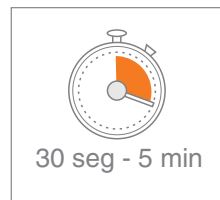
2. Corte la bolsa de plástico sellada herméticamente por la línea de puntos de la parte superior.



3. Introduzca la toallita central en el agujero y deséchela tirando de ella. Coja cada toallita necesaria en un ángulo de 45°



4. Use una nueva toallita cada vez, en las superficies u objetos que desee desinfectar hasta que estén completamente humedecidos.



5. Deje que el desinfectante actúe por un mínimo de 30 segundos (para lograr la máxima eficacia déjelo 5 minutos), permitiendo su total evaporación o limpiándolo con un trapo limpio. Recomendado para uso profesional. Lea la etiqueta del producto o la hoja de seguridad para mayores datos técnicos. Consulte a su distribuidor local.

Cualquier incidente serio en relación a este producto sanitario debe ser informado al fabricante y a las autoridades competentes.

Composición: Aqua, Benzyl-C12-18-Alkyldimethyl Chlorides, C12-14-Alkyl[(Ethylphenyl)Methyl]Dimethyl Chlorides, Didecylldimethylammonium Chloride, 2-Propanol (not an active, <1%), Surfactant, Dipropylene glycol monomethyl ether, Polyhexamethylene biguanide hydrochloride, Cocamidopropyl Betaine, Tetrasodium EDTA, Antifoam, Preservative, Aroma.

Precaución. P101: En caso de accidente tenga a mano el envase o etiqueta . P102: Mantener alejado de los niños. P301+P312: En caso de ingestión llame al servicio de información toxicológica o a su médico si se encuentra mal. P305+P351+P338: En caso de contacto con los ojos, enjuáguelos con cuidado con agua o soluciones de enjuague específicas. Elimine lentes de contacto si es posible hacerlo con seguridad y continúe enjuagando. Se recomienda el uso de gafas de protección.



Para detalles de eficacia y otros datos consulte www.topdental.co.uk

Section 1: Identification of the substance/mixture and of the company/undertaking

1.1. Product identifier

Product name: ALCOHOL SURFACE WIPES NEW

1.2. Relevant identified uses of the substance or mixture and uses advised against

Use of substance / mixture: PC8: Biocidal products (e.g. Disinfectants, pest control).

1.3. Details of the supplier of the safety data sheet

Company name: Topdental (Products) Ltd
12 Ryefield Way
Silsden
West Yorkshire
BD20 0EF

Tel: +44 01535652750

Fax: +44 01535652751

Email: science@topdental.co.uk

1.4. Emergency telephone number

Emergency tel: +44 01535652750

Office hours: 08.30 - 17:00 (UK)

Section 2: Hazards identification

2.1. Classification of the substance or mixture

Classification under CLP: Flam. Sol. 1: H228; Eye Irrit. 2: H319

Most important adverse effects: Flammable solid. Causes serious eye irritation.

2.2. Label elements

Label elements:

Hazard statements: H228: Flammable solid.

H319: Causes serious eye irritation.

Hazard pictograms: GHS02: Flame

GHS07: Exclamation mark



Signal words: Danger

Precautionary statements: P210: Keep away from heat, hot surfaces, sparks, open flames and other ignition sources. No smoking.

P235: Keep cool.

SAFETY DATA SHEET

ALCOHOL SURFACE WIPES NEW

Page: 2

P403+P233: Store in a well-ventilated place. Keep container tightly closed.

P280: Wear protective gloves/protective clothing/eye protection/face protection.

P303+P361+P353: IF ON SKIN (or hair): Take off immediately all contaminated clothing.
Rinse skin with water .

P370+P378: In case of fire: Use alcohol resistant foam or carbon dioxide to extinguish.

P305+P351+P338: IF IN EYES: Rinse cautiously with water for several minutes. Remove contact lenses, if present and easy to do. Continue rinsing.

2.3. Other hazards

Other hazards: In use, may form flammable / explosive dust-air mixture.

PBT: This product is not identified as a PBT/vPvB substance.

Section 3: Composition/information on ingredients

3.2. Mixtures

Hazardous ingredients:

ETHANOL

EINECS	CAS	PBT / WEL	CLP Classification	Percent
200-578-6	64-17-5	Substance with a Community workplace exposure limit.	Flam. Liq. 2: H225	50-70%

Section 4: First aid measures

4.1. Description of first aid measures

Skin contact: Remove all contaminated clothes and footwear immediately unless stuck to skin.
Drench the affected skin with running water for 10 minutes or longer if substance is still on skin.

Eye contact: Bathe the eye with running water for 15 minutes. Consult a doctor.

Ingestion: Do not induce vomiting. If conscious, give half a litre of water to drink immediately.
Consult a doctor.

Inhalation: Remove casualty from exposure ensuring one's own safety whilst doing so. Consult a doctor.

4.2. Most important symptoms and effects, both acute and delayed

Skin contact: There may be mild irritation at the site of contact.

Eye contact: There may be irritation and redness.

Ingestion: There may be irritation of the throat.

Inhalation: There may be irritation of the throat with a feeling of tightness in the chest.

4.3. Indication of any immediate medical attention and special treatment needed

Immediate / special treatment: Not applicable.

[cont...]

SAFETY DATA SHEET
ALCOHOL SURFACE WIPES NEW

Page: 3

Section 5: Fire-fighting measures

5.1. Extinguishing media

Extinguishing media: Alcohol resistant foam. Water spray. Carbon dioxide. Dry chemical powder.

5.2. Special hazards arising from the substance or mixture

Exposure hazards: Highly flammable. In combustion emits toxic fumes. May form flammable / explosive dust-air mixture.

5.3. Advice for fire-fighters

Advice for fire-fighters: Wear self-contained breathing apparatus. Wear protective clothing to prevent contact with skin and eyes.

Section 6: Accidental release measures

6.1. Personal precautions, protective equipment and emergency procedures

Personal precautions: Refer to section 8 of SDS for personal protection details. Notify the police and fire brigade immediately. Eliminate all sources of ignition.

6.2. Environmental precautions

Environmental precautions: Do not discharge into drains or rivers.

6.3. Methods and material for containment and cleaning up

Clean-up procedures: Transfer to a closable, labelled salvage container for disposal by an appropriate method. Do not use equipment in clean-up procedure which may produce sparks.

6.4. Reference to other sections

Reference to other sections: Refer to section 8 of SDS.

Section 7: Handling and storage

7.1. Precautions for safe handling

Handling requirements: Smoking is forbidden. Use non-sparking tools. Ensure there is sufficient ventilation of the area. Avoid the formation or spread of dust in the air.

7.2. Conditions for safe storage, including any incompatibilities

Storage conditions: Store in a cool, well ventilated area. Keep container tightly closed. Keep away from sources of ignition. Prevent the build up of electrostatic charge in the immediate area. Ensure lighting and electrical equipment are not a source of ignition.

7.3. Specific end use(s)

Specific end use(s): PC8: Biocidal products (e.g. Disinfectants, pest control).

Section 8: Exposure controls/personal protection

[cont...]

SAFETY DATA SHEET
ALCOHOL SURFACE WIPES NEW

Page: 4

8.1. Control parameters

Workplace exposure limits: No data available.

DNEL/PNEC Values

Hazardous ingredients:

ETHANOL

Type	Exposure	Value	Population	Effect
DNEL	Dermal	343mg/kg	Workers	-
DNEL	Dermal	206mg/kg	Consumers	-

8.2. Exposure controls

Engineering measures: Ensure there is sufficient ventilation of the area. Ensure lighting and electrical equipment are not a source of ignition.

Respiratory protection: Respiratory protection not required.

Hand protection: Protective gloves.

Eye protection: Safety glasses.

Skin protection: Protective clothing.

Section 9: Physical and chemical properties

9.1. Information on basic physical and chemical properties

State: Solid

Colour: Colourless

Odour: Alcoholic

Relative density: 0.880 - 0.900

pH: 6.50 - 8.50

9.2. Other information

Other information: No data available.

Section 10: Stability and reactivity

10.1. Reactivity

Reactivity: Stable under recommended transport or storage conditions.

10.2. Chemical stability

Chemical stability: Stable under normal conditions. Stable at room temperature.

10.3. Possibility of hazardous reactions

Hazardous reactions: Hazardous reactions will not occur under normal transport or storage conditions.
Decomposition may occur on exposure to conditions or materials listed below.

10.4. Conditions to avoid

Conditions to avoid: Heat. Hot surfaces. Sources of ignition. Flames.

[cont...]

SAFETY DATA SHEET
ALCOHOL SURFACE WIPES NEW

Page: 5

10.5. Incompatible materials

Materials to avoid: Strong oxidising agents. Strong acids.

10.6. Hazardous decomposition products

Haz. decomp. products: In combustion emits toxic fumes.

Section 11: Toxicological information

11.1. Information on toxicological effects

Hazardous ingredients:

ETHANOL

DERMAL	RBT	LD50	>2000	mg/kg
ORAL	RAT	LD50	>2000	mg/kg

Relevant hazards for product:

Hazard	Route	Basis
Serious eye damage/irritation	OPT	Hazardous: calculated

Symptoms / routes of exposure

Skin contact: There may be mild irritation at the site of contact.

Eye contact: There may be irritation and redness.

Ingestion: There may be irritation of the throat.

Inhalation: There may be irritation of the throat with a feeling of tightness in the chest.

Section 12: Ecological information

12.1. Toxicity

Ecotoxicity values: No data available.

12.2. Persistence and degradability

Persistence and degradability: Biodegradable.

12.3. Bioaccumulative potential

Bioaccumulative potential: No bioaccumulation potential.

12.4. Mobility in soil

12.5. Results of PBT and vPvB assessment

PBT identification: This product is not identified as a PBT/vPvB substance.

12.6. Other adverse effects

Other adverse effects: Negligible ecotoxicity.

[cont...]

SAFETY DATA SHEET
ALCOHOL SURFACE WIPES NEW

Page: 6

Section 13: Disposal considerations

13.1. Waste treatment methods

Disposal operations: Transfer to a suitable container and arrange for collection by specialised disposal company.

NB: The user's attention is drawn to the possible existence of regional or national regulations regarding disposal.

Section 14: Transport information

14.1. UN number

UN number: UN3175

14.2. UN proper shipping name

Shipping name: SOLIDS CONTAINING FLAMMABLE LIQUID, N.O.S.
(ETHANOL)

14.3. Transport hazard class(es)

Transport class: 4.1

14.4. Packing group

Packing group: II

14.5. Environmental hazards

Environmentally hazardous: No

Marine pollutant: No

14.6. Special precautions for user

Special precautions: No special precautions.

Tunnel code: E

Transport category: 2

Section 15: Regulatory information

15.1. Safety, health and environmental regulations/legislation specific for the substance or mixture

Specific regulations: Not applicable.

15.2. Chemical Safety Assessment

Chemical safety assessment: A chemical safety assessment has not been carried out for the substance or the mixture by the supplier.

Section 16: Other information

Other information

Other information: according to Regulation (EC) No. 1907/2006 (REACH) with its amendment Regulation (EU) 2015/830

* indicates text in the SDS which has changed since the last revision.

[cont...]

SAFETY DATA SHEET
ALCOHOL SURFACE WIPES NEW

Page: 7

Phrases used in s.2 and s.3: H225: Highly flammable liquid and vapour.

H228: Flammable solid.

H319: Causes serious eye irritation.

Legal disclaimer: The above information is believed to be correct but does not purport to be all inclusive and shall be used only as a guide. This company shall not be held liable for any damage resulting from handling or from contact with the above product.

